

ACCESS TO ROOF AND ANTENNA BY CHERRY PICKER ONLY

PROPOSED ARQIVA SMART METERING 1 No. OMNI ANTENNA AT 14.4m BEARINGS OMNI E.T.N. I.D. TBC - ON NEW TRIPOD FRAME

PROPOSED ARQIVA SMART METERING 1 No. GPS UNIT AT 1.5m BEARING OMNI E.T.N. I.D. No. TBC - ON SIDE OF CABIN

PROPOSED 1000 INCOMING POWER DUCT

PROPOSED ARQIVA SMART METERING METER CABINET ON CONCRETE BASE

PROPOSED 1000 SUB-MAIN POWER DUCT

ACCESS GATE

PROPOSED ARQIVA SMART METERING CABINET ON CONCRETE BASE

PROPOSED 150mm COVERED CABLE TRAY ELEVATED ON ROOF PRO MOUNTS

CELL No. NE038

CONTRACTOR:- BLUE CLARITY

CONSULTANT:- DALY INTERNATIONAL  
FARBANK HOUSE  
ASHLEY ROAD  
ALTRINGHAM, CHESHIRE  
WA14 2DP

ENGINEER:- JOHN STOCKDALE  
0161 941 5481  
john.stockdale@dalyinternational.com

DRAWING MANAGER:- JOHN BOOTE  
0161 941 5481  
john.boote@dalyinternational.com

PROJ No	DATE	ISS	REVISION	DATE	DRN/APP
PROJ No 1	17/5/284	22/05/13	DAL		
1.A	PLANNING ISSUE				
1	FIRST ISSUE	22/05/13	HM	HF	



Crawley Court, Winchester, Hampshire, SO21 20A  
Tel. 01962 823434, Fax. 01962 823378

SITE No 166241  
BOLDON ATE  
ST BEDES TERRACE  
EAST BOLDON  
TYNE AND WEAR  
NE36 0LF

NGR NZ 36830 61240  
OS GRID 436830 561240

TITLE  
SITE PLAN  
PROPOSED  
ARQIVA SMART METERING

SCALE 1:200

DRAWN	HM	22/05/15
APPROVED	HF	22/05/15

DRG No. 166241 - 01-100 - MD001 1.A  
Sheet 1 of 1 Rev

FEINT DETAILS INDICATE LOCATIONS RESERVED FOR OTHER PROPOSALS WHICH MAY BE THE SUBJECT OF SEPARATE APPLICATIONS

**PROPOSED ANTENNA DETAILS**

I.D. No.	ITEM	TYPE / SIZE	BEARING	MEAN HEIGHT	FEEDER LENGTH	FEEDER TYPE	NO. OF FEEDERS	RET
TBC	A1	JAYBEAM 75867XX	OMNI	14.4m	20.0m	LPF4-50	1	N/A
TBC	A2	TRIMBLE BULLET III GPS	OMNI	1.5m	4.0m	CNT400	1	N/A

©2010 Arqiva  
 All rights reserved. No part of this publication may be reproduced, stored in a retrieval system or transmitted in any form or by any means (Electronic, Mechanical, Photocopying, Recording or otherwise), without the prior written consent of the Company.

**NOTES**

**CELL No. | NE038**

CONTRACTOR:- BLUE CLARITY  
 CONSULTANT:- DALY INTERNATIONAL  
 FARRBANK HOUSE  
 ASHLEY ROAD  
 ALTRINCHAM, CHESHIRE  
 WA14 2DP

ENGINEER:- JOHN STOCKDALE  
 0181 941 5481  
 john.stockdale@dalyinternational.com  
 DRAWING JOHN BOOTE  
 0181 941 5481  
 MANAGER:- john.boote@dalyinternational.com

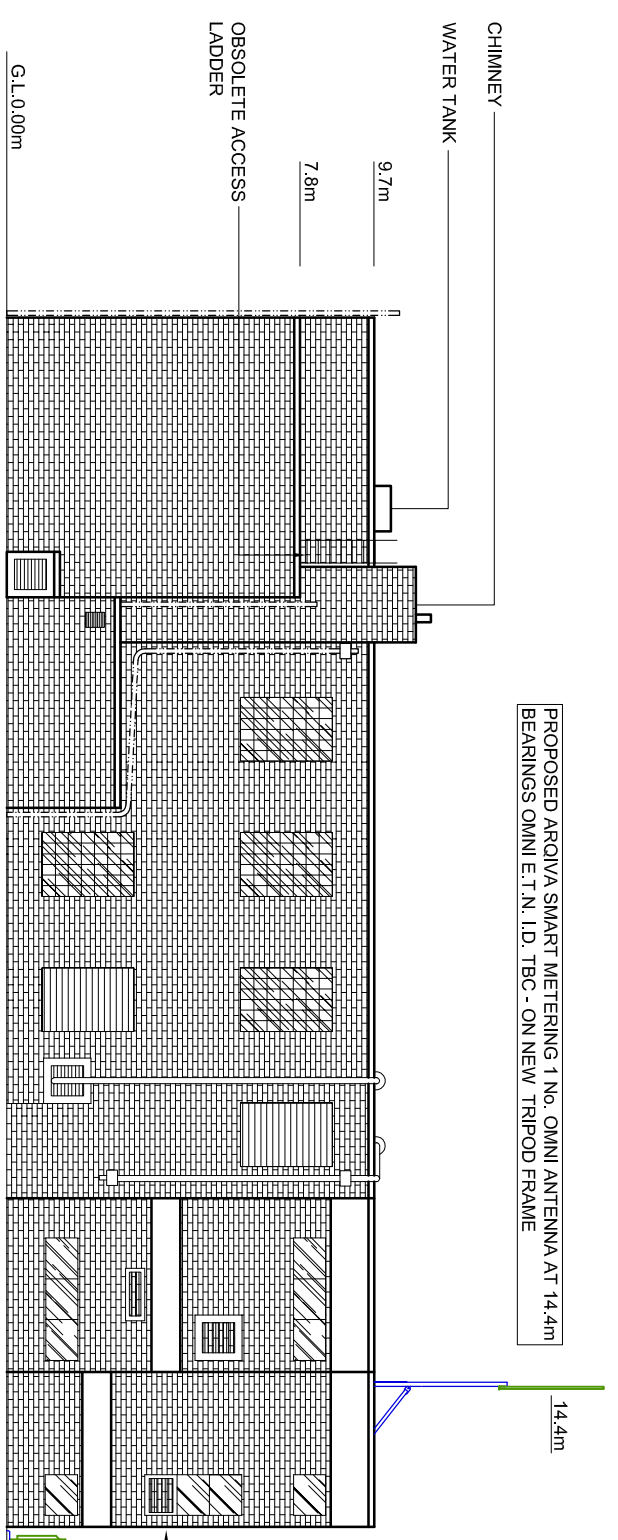
PROJ No	ISS	REVISION	DATE	DRN/APP
PROJ No 1	1.A	PLANNING ISSUE	22/05/13	DAJ
PROJ No 1	1	FIRST ISSUE	22/05/13	HMI HF



Crawley Court, Winchester, Hampshire, SO21 2QA  
 Tel. 01962 823434, Fax. 01962 823278  
**SITE No 166241**  
 BOLDON ATE  
 ST BEDES TERRACE  
 EAST BOLDON  
 TYNE AND WEAR  
 NE36 0LF

NGR NZ 36830 61240  
 OS GRID 436830 561240  
 TITLE  
 ELEVATION  
 PROPOSED  
 ARQIVA SMART METERING

SCALE 1:200  
 DRAWN HM 22/05/15  
 APPROVED HF 22/05/15  
 DRG No. Sheet 1 of 1 Rev  
**166241 - 01-150 - MD001 1.A**



PROPOSED ARQIVA SMART METERING 1 No. OMNI ANTENNA AT 14.4m BEARINGS OMNI E.T.N. I.D. TBC - ON NEW TRIPOD FRAME

ACCESS TO ROOF AND ANTENNA BY CHERRY PICKER ONLY

PROPOSED 150mm COVERED CABLE TRAY FIXED TO BUILDING WALL  
 PROPOSED ARQIVA SMART METERING CABINET ON CONCRETE BASE  
 PROPOSED ARQIVA SMART METERING 1 No. GPS UNIT AT 1.5m BEARING OMNI E.T.N. I.D. No. TBC - ON NEW TRIPOD FRAME

**WEST ELEVATION**

FEINT DETAILS INDICATE LOCATIONS RESERVED FOR OTHER PROPOSALS WHICH MAY BE THE SUBJECT OF SEPARATE APPLICATIONS